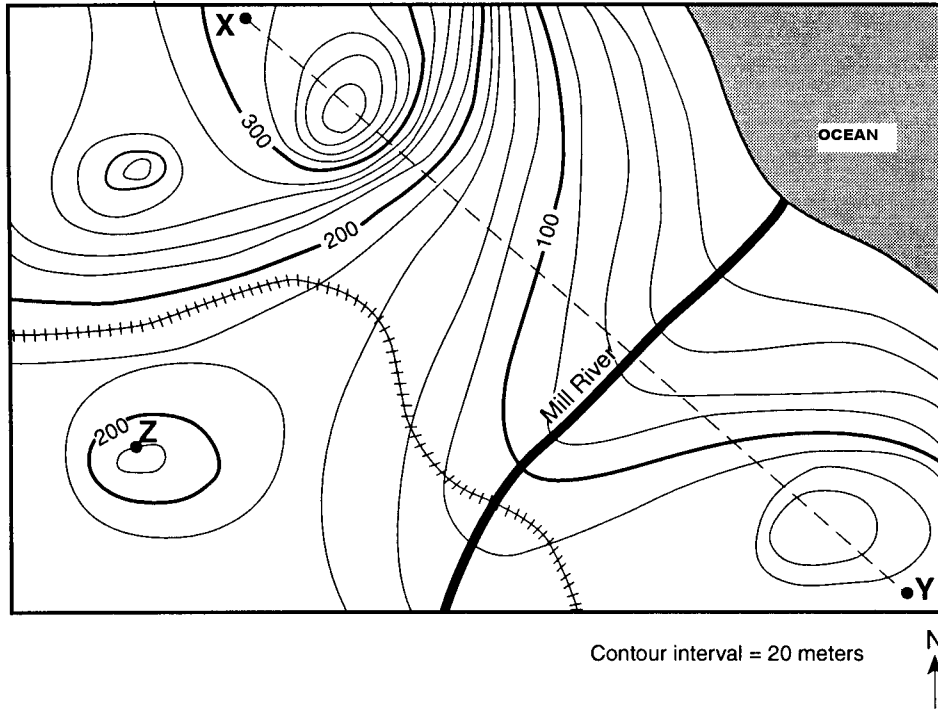


Base your answers to questions 1 and 2 on the topographic map below. Points X, Y, and Z are locations on the map. Elevations are expressed in meters.



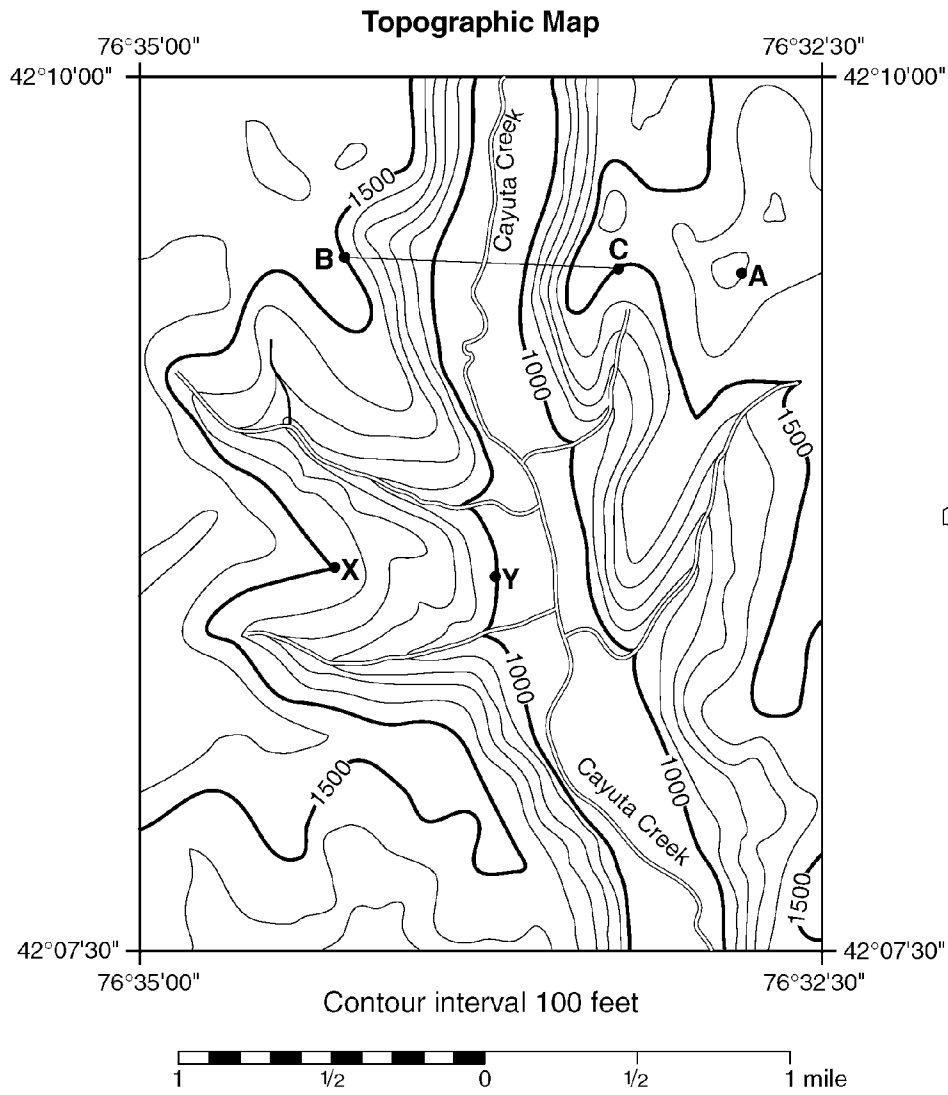
1. Mill River generally flows toward the

- 1) southeast
- 2) southwest
- 3) northeast
- 4) northwest

2. What is the elevation of point Z?

- 1) 190 m
- 2) 220 m
- 3) 240 m
- 4) 250 m

Base your answers to questions 3 and 4 on the maps below. Points A, B, C, X, and Y are locations on the topographic map. The small map identifies the New York State region shown in the topographic map.



3. What is the elevation of point A on the topographic map?

- 1) 1,700 ft
- 2) 1,650 ft
- 3) 1,600 ft
- 4) 1,550 ft

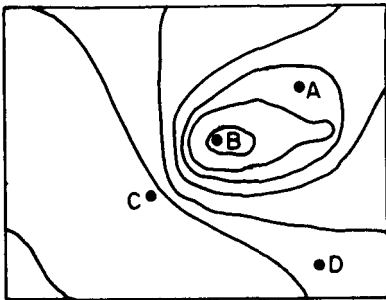
4. What is the approximate gradient between point X and point Y?

- 1) 100 ft/mi
- 2) 250 ft/mi
- 3) 500 ft/mi
- 4) 1,000 ft/mi

5. A stream has a source at an elevation of 1,000. meters. It ends in a lake that has an elevation of 300. meters. If the lake is 200. kilometers away from the source, what is the average gradient of the stream?

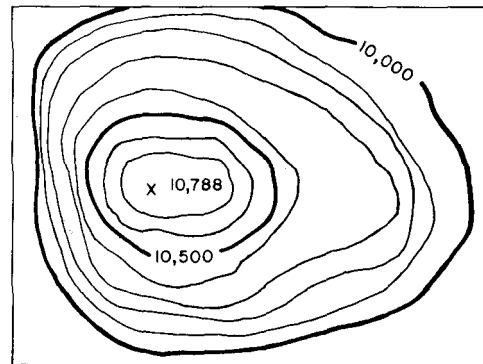
- 1) 1.5 m/km
- 2) 3.5 m/km
- 3) 10. m/km
- 4) 15 m/km

6. The diagram below is a contour map. Between which two points is the slope of the hill steepest?



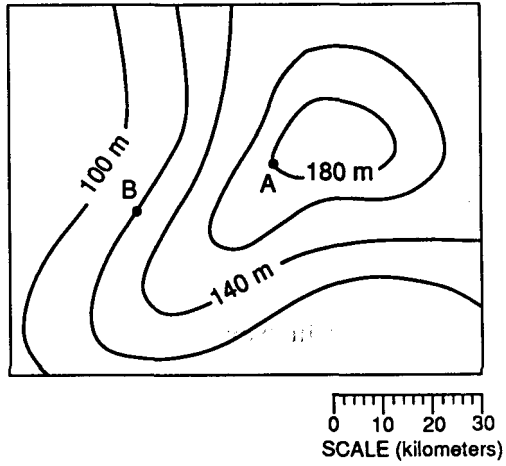
- 1) A and B
- 2) B and C
- 3) C and D
- 4) A and D

7. What is the elevation of the highest contour line shown on the map below?



- 1) 10,000 feet
- 2) 10,688 feet
- 3) 10,700 feet
- 4) 10,788 feet

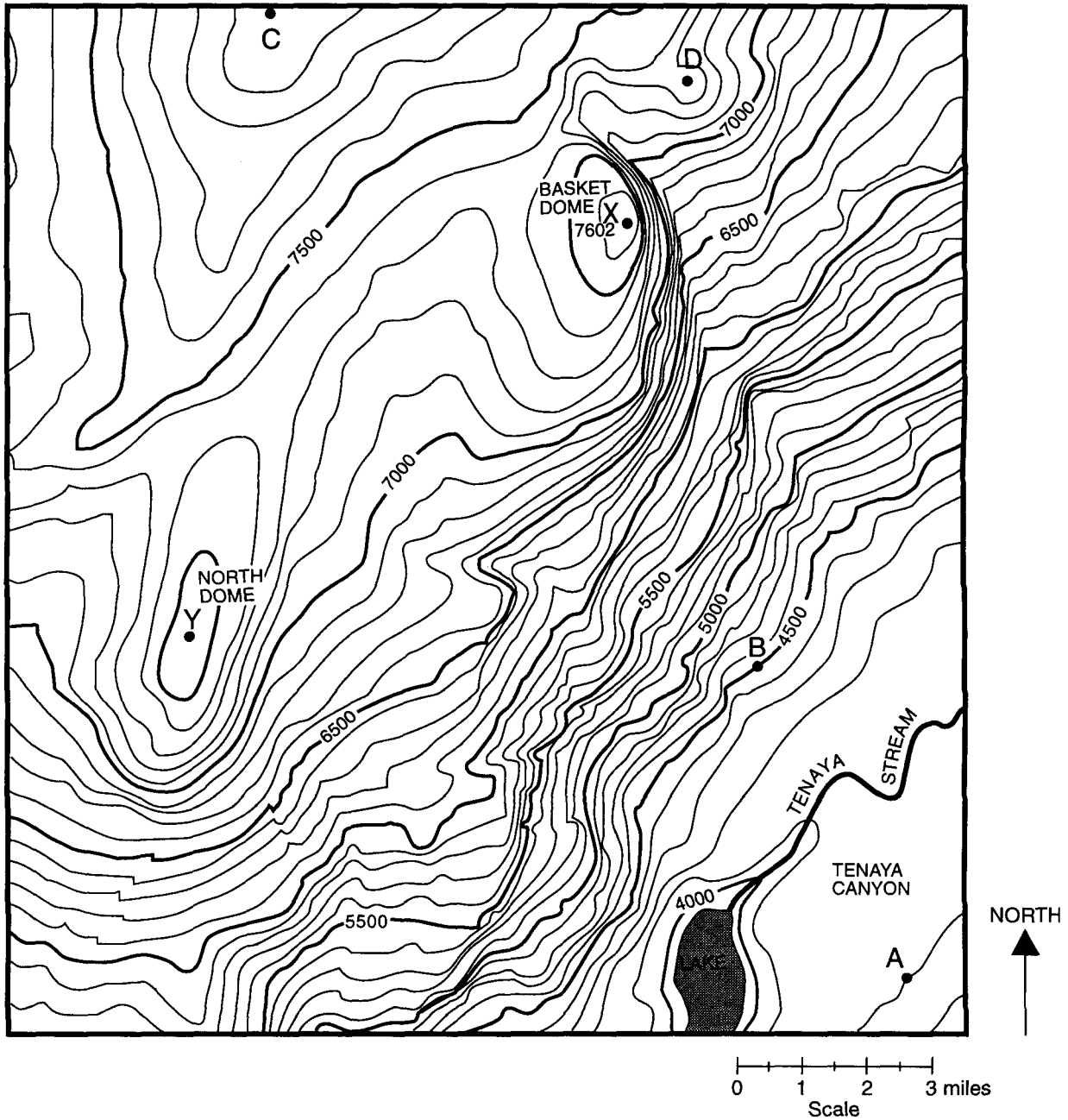
8. The map below represents an elevation field.



What is the approximate gradient between point *A* and point *B*?

- 1) 0.5 m/km
- 2) 2.0 m/km
- 3) 3.0 m/km
- 4) 4.0 m/km

Base your answers to questions 9 through 11 on the contour map below. Points A, B, C, D, X, and Y are locations on the map. Elevations are expressed in feet. The maximum elevation of Basket Dome is indicated at point X.



9. In which general direction does Tenaya Stream flow?

- 1) southeast to northwest
- 2) northwest to southeast
- 3) southwest to northeast
- 4) northeast to southwest

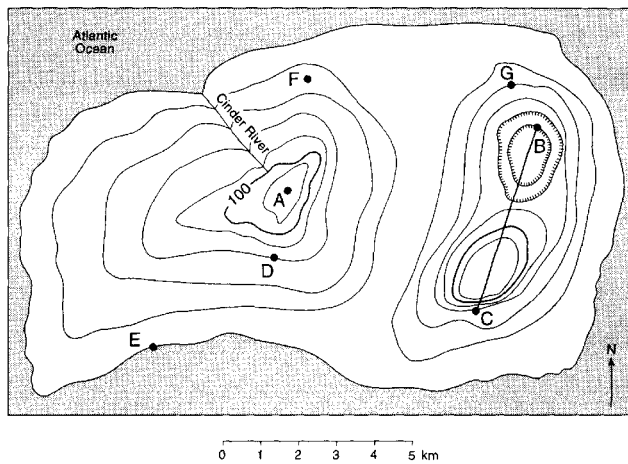
10. The highest elevation on the map is at point

- 1) *X*
- 2) *Y*
- 3) *C*
- 4) *D*

11. The highest elevation of Basket Dome 40 years ago was measured at 7,600 feet. What is the rate of change in elevation for this area?

- 1) 0.6 in/yr
- 2) 1.7 in/yr
- 3) 24 in/yr
- 4) 40 in/yr

Base your answers to questions **12** through **15** on the contour map of an island below. Points *A* through *G* represent locations on the island. Elevations are in meters.



12. Which point is located on the steepest slope?

- 1) *F*
- 2) *B*
- 3) *C*
- 4) *D*

13. In which direction does the Cinder River flow?

- 1) southeast
- 2) southwest
- 3) northeast
- 4) northwest

14. What is the contour interval for this map?

- 1) 10 m
- 2) 15 m
- 3) 20 m
- 4) 25 m

15. Which two points have the same elevation?

- 1) *G* and *F*
 - 2) *B* and *D*
 - 3) *C* and *D*
 - 4) *G* and *C*
-

Answer Key
HW 106 Earth Science Mapping Questions [Oct 06, 2009]

